



Museum Press Release

For Immediate Release

June 14, 2013

Contact: Val Robinson

Phone: 214-368-4622

Artist Tobi Kahn: *Lumina* Exhibition Abstractions in Response to Ancient Jewish Manuscripts

Lumina is the title for the new paintings exhibition featuring New York artist Tobi Kahn at The Museum of Biblical Art in Dallas, TX. Kahn is a painter and sculptor whose work has been shown in over 40 solo exhibitions and over 60 museum and group shows. He was selected as one of nine artists to be included in the 1985 Guggenheim Museum exhibition, *New Horizons in American Art*. In cooperation with The Jewish Theological Seminary in New York, Tobi Kahn created paintings based on illuminated manuscripts from the rare books room collection chosen by Sharon Liberman Mintz, curator of Jewish Art at the Library of The Jewish Theological Seminary.

The original Jewish manuscripts were catalysts for the creation of these extraordinary paintings. The exhibit opens June 18th and runs through the middle of October, the museum's most popular time for tourists. Tobi Kahn states: "I am thrilled to have my work exhibited in this museum. These paintings are for people from all faiths to talk about the spiritual dimension of their lives." An audio tour has been created where the artist explains his art work and process.

"Artist Tobi Kahn has created a series of abstract paintings in response to some of the greatest ancient Jewish illuminated manuscripts. Illumination means source of light. These paintings express spiritual and intellectual enlightenment," states Museum Curator Scott Peck. "Kahn's work is like God's light of revelation." Each painting is a dialogue and conversation with treasured illuminated texts and sacred Jewish writings.

Artist Tobi Kahn: *Lumina* Paintings Exhibition

June 18th – October 15th 2013

Art Talk: Sunday, September 29th at 3 PM

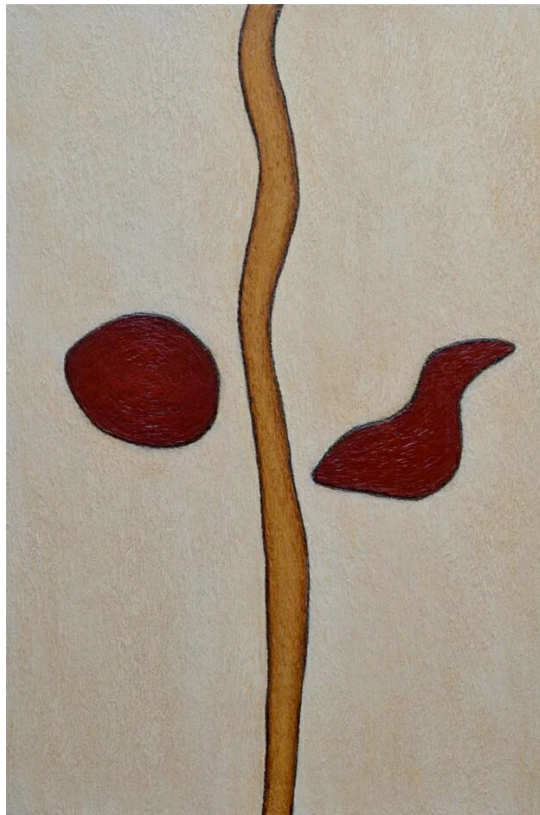
The MBA - Museum of Biblical Art

7500 Park Lane Dallas, TX Across from the North Park Nordstrom and Neiman Marcus 214-368-4622

Hours: Tuesday – Saturday 10:00 to 5:00 Sunday 1:00 to 5:00 www.biblicalarts.org



“OKVAH” Tobi Kahn



“RYKADH” Tobi Kahn



“ATSYZ” Tobi Kahn



“MUKAPH” Tobi Kahn